

# developing relationships. building reputations.

Specialist graphic design & web design for  
residential and commercial developments.







# add a shot of adrenaline to your marketing campaigns.

We have a proven track record delivering creative design and web design services to many of the UK's leading residential and commercial developers, agents, architects and construction industry suppliers. Since 2001 we have become the preferred supplier for many of the UK's leading names and have worked on many high profile projects across the East, Midlands and South East. Outside of the property sector we have also been commissioned by leading organisations including RSPB, Play.com, Microsoft, Bentley, SOS Children's Villages and EEDA.

Our professional team deliver branded and fully integrated marketing materials across a wide range of media. We fulfil the creative requirements of new and existing brands across a range of disciplines including:

- origination of new branding
- design of brochures and direct mail
- design and development of websites, email campaigns, online ads, mobile and SEO
- creation of advertising campaigns – print, outdoor and radio
- copywriting
- art direction & photography
- restyling of site plans and floorplans
- site hoarding and wayfinding design
- strategic campaign and project management.

Our brand values:

- providing thought-provoking design with a commercial realism
- being passionate about our client successes
- a commitment to long-term relationships.

If you are looking give your development a little added stimulation contact:

Andrew Ashworth,  
Marketing Director,  
Adrenaline Creative

tel: 01223 421264  
email: [info@adrenalinecreative.co.uk](mailto:info@adrenalinecreative.co.uk)  
web: [adrenalinecreative.co.uk](http://adrenalinecreative.co.uk)

Foster + Partners



BIDWELLS

# clients

We have earned a reputation for excellence in the sector with regular commissions from a range of organisations - from SMES through to international brands.







THE HOUSE DESIGNERS.



# branding

Our creative team have created distinctive brands for a wide portfolio of projects and commercial ventures. Each individual logo is carefully created to reflect the brand values of the project and the developer.



# residential

Developers are usually seeking to ensure that their investment provides swift returns. From the original brief through to the execution, our team provide a fully integrated approach to ensure that all the marketing materials are delivered on schedule and achieve real stand out in a competitive market place.





a prestigious development of  
24 contemporary waterfront houses

interiors by design -  
exteriors by nature

For all its luxury and sophisticated design, Waters Edge puts you at the heart of a stunning natural environment. Offer its vast private mooring, each property offers extensive and efficient access to the River Here, which adds to why, through Northamptonshire, South Hampshire and Lancashire, passing through Bedford, Essex, Northampton and in the rapidly developing Northampton and Bedfordshire on its way to the sea.

The river itself attracts boating of all kinds - from leisure boating and motor cruising to racing and canyoning - and it's easy to see why. Along the Here you'll find a great abundance of wildlife, including moorhens, mallards, coots, gulls and herons, and the surrounding grass and woodland provides a haven for all manner of wild garden species. Despite all this, the river remains refreshingly quiet, making it a natural haven.

Most ideal in fact, located right outside your door for the lake and the sea, and the lap of the water makes your creative side, or simply relax on your private balcony, up river, and let things drift by.

We hope the setting. How you enjoy it is up to you.

home

the location  
house sizes  
house styles  
specification  
situation  
how to find us  
contact  
T&C

escape to the waters edge

Situated just outside the idyllic village of Wansford and close to historic Stamford, Waters Edge is an exclusive development of luxury second homes that brings together design and nature in perfect harmony.

Set in the gently rolling countryside of the Here Valley with immediate access to the river, Phase 1 of the Waters Edge development features a mix of 24 houses in a prestigious gated sanctuary, built in either traditional honey-coloured stone or a bright, New England style. Each has its own private mooring and is finished to incredible high specification, bringing the style and convenience of modern living to a truly idyllic natural environment. Easy access to the A1 and A47 and proximity to Peterborough ensure that superb amenities and national road and rail links are always close at hand when you need them.

The perfect escape.

For further information  
and a development  
brochure contact

tel: 01753 708000  
brochure@watersedge.com

waters edge

client: Howlett Leisure & Savills - London

- brochure design
- brand origination
- copy writing
- website design and build
- large format signage
- print advert design
- art direction



# LUXURY FOR LIFE

Baufritz is passionate about creating a luxurious living environment that's designed just for you.

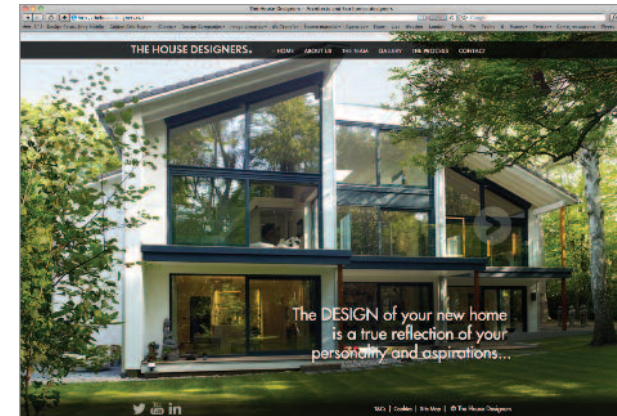
All our homes use an abundance of high quality, natural materials that are completely free of toxins, creating a harmonious atmosphere that looks beautiful, protects the environment and makes you feel good.

To find out more about Baufriz or to make an appointment contact Baufriz in Cambridge:  
01223 235632  
enquiries@baufriz.co.uk  
www.baufriz.co.uk



## client: Baufriz - UK

- brochure design
- copy writing
- website design and build
- large format exhibition materials
- magazine advert design
- direct mail design
- art direction and photography





Enjoy a taste of England's finest

The Manor is the perfect Suffolk escape and ideally located offering easy access to the county's beautiful coastline. Situated on the shores of Cambridge, facing an 18th-century lake, the property is surrounded by mature trees and rolling countryside.

Visit our website to see the film and find out more about our recent search from What House? Finding Norfolk from Here, the property and the Manor & Gardens. 1, 2, 3 bed apartments and houses from £170,000 to £255,000

01223 347000

Find us at IP28 6SH For more information text MANOR to 60123  
www.herringswellmanor.co.uk

**themanor**  
HERRINGSWELL - SUFFOLK

**themanor**  
HERRINGSWELL - SUFFOLK

Enjoy a taste of England's finest

Discover the charm and beauty of the county's finest houses and gardens. The Manor is a truly exceptional property, offering a unique blend of history and modern living. The property is surrounded by mature trees and rolling countryside, making it the perfect escape from the city.

01223 347000

**themanor**

Your new country seat

Renovated and new apartments and houses for sale

www.herringswellmanor.com  
01279 818900  
Please call to arrange a viewing

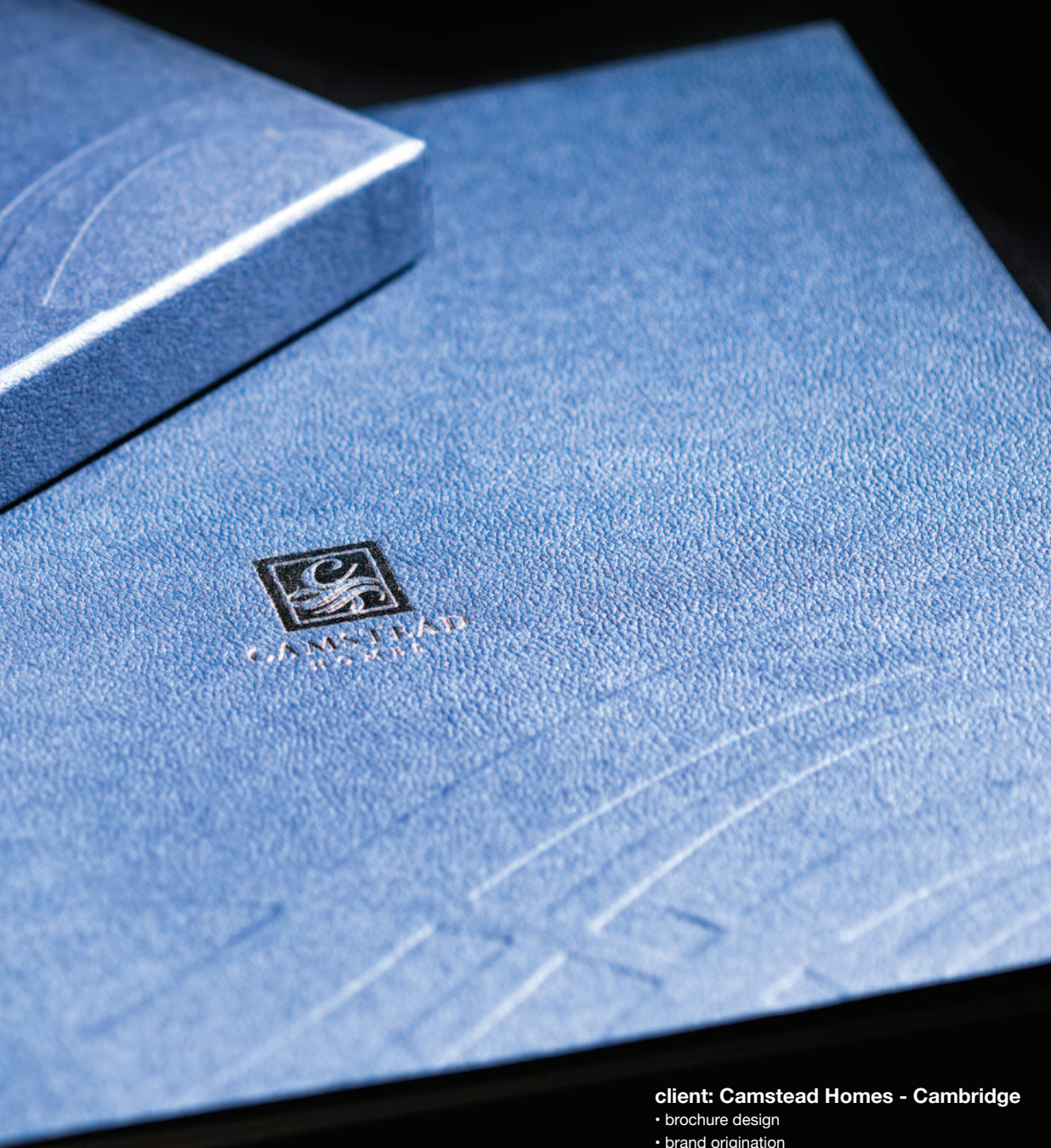
**themanor**  
HERRINGSWELL - SUFFOLK



**client: City and Country - South East**

- brochure design
- brand origination
- copy writing
- website design and build
- large format materials and signage
- print advert design
- direct mail design
- art direction and photography
- dvd packaging





**client: Camstead Homes - Cambridge**

- brochure design
- brand origination
- copy writing
- website design and build
- large format exhibition materials
- print advert design
- direct mail design
- art direction and photography







discover paradise

//discover paradise //cambridge living //eden style //location //walkthrough //contact

click to enlarge

Welcome to Eden – fifteen contemporary apartments in Cambridge's highly sought-after Kite area. It's that rarest of treasures – a city lifestyle without compromise. The perfect balance: an exciting blend of rich history and contemporary culture; a hotbed of inspiring ideas and a haven of tranquility. Simply a great place to live.

Unique. Stylish. And with one of the UK's most beautiful, historic city centres right on your doorstep – Eden affords a rare opportunity to be where you belong – at the heart of it all.

CAMSTEAD HOMES EDEN



EDEN THE PERFECT BALANCE

temptation on your doorstep

EDEN – a rare opportunity to enjoy world-class living in the heart of Cambridge  
your personal paradise is waiting

CAMSTEAD HOMES

new city centre apartments. Free telephone 1455000  
01223 240000  
camstead.co.uk/eden





**LEXINGTON**

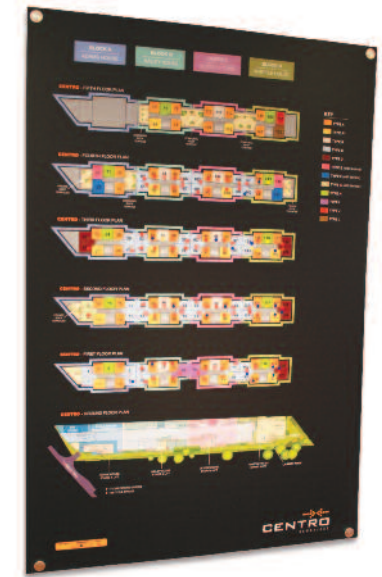
CAMBRIDGE

breath-taking development of apartments,  
duplexes and a stunning penthouse





Welcome to  
**CENTRO**  
CAMBRIDGE



where great ideas come together  
151 contemporary student apartments

**CENTRO**  
CAMBRIDGE





**client: Freshwater Estates - Eastern region**

- brochure and polyprop' folder design
- brand origination
- copy writing
- website design and build
- print advert design
- large format materials and signage
- art direction and photography



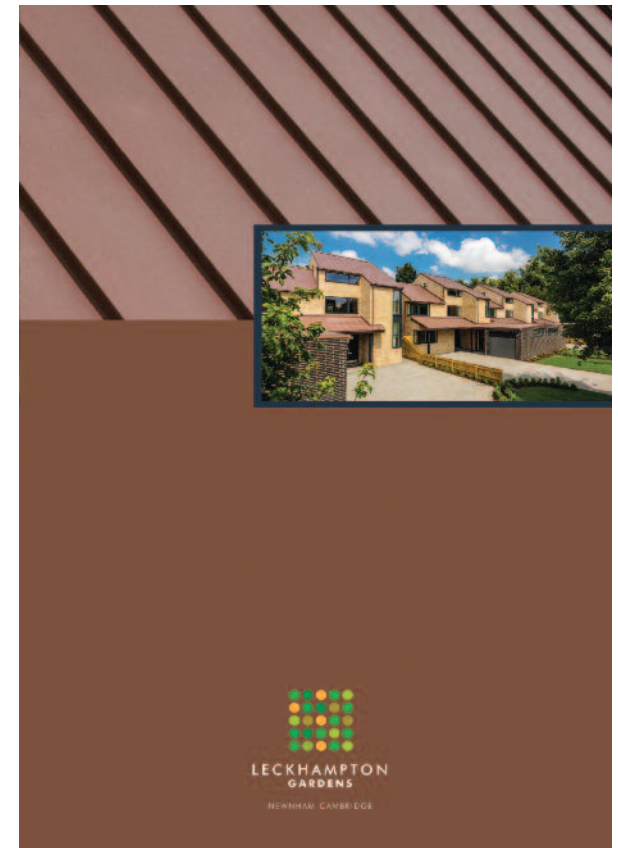
PARKERS  
MILL







- client: Tucker Gardner**
- advert design and copy writing
  - promotional materials design
  - brochure design and copy writing
  - newsletter design and copy writing



**LECKHAMPTON GARDENS**  
NORTHWAY, CAMBRIDGE

**FROM 4 BEDROOMS**

**Design without compromise**

Leckhampton Gardens offers a rare opportunity to enjoy contemporary living at its finest. Located in the sought after village of Northway, this exciting development comprises only four 2-story houses, stone or the one of a kind outdoor, just a short distance from Cambridge's city centre.

Every little detail throughout the development has been carefully considered - from the stunning open plan and light filled interiors featuring stone, splash kitchens and luxurious living rooms, bedrooms and bathrooms - through to the enclosed rear gardens with slate patios and lush lawns surrounded by a variety of established trees.

A development by **IDENTIFIED DEVELOPMENTS**

Prices from £1.295 m

To reserve a private viewing please contact:  
New homes office: **01223 845240** or Cambridge office: **01223 350800**  
**tuckergardner.com**

**Tucker Gardner**

Join us and see what all the buzz has been about

**LECKHAMPTON GARDENS**  
NORTHWAY, CAMBRIDGE

**An exclusive invitation**

We would like to invite you to an exclusive opportunity to celebrate the success of Leckhampton Gardens - Cambridge's new iconic residential development located in a desirable Northway cul-de-sac. Recently ALL SOLD in under 2 weeks.

We hope you can join us on Monday 2nd September between 3pm and 7pm for a glass of Champagne at Leckhampton Gardens. It is a unique opportunity to see at first hand the quality, finish and bold architectural styling that are at the forefront of all Identified Developments projects.

**Revp: Kerl McCloskey**  
**Marketing Manager**

**T: 01223 229620**  
**E: kmccloskey@tuckergardner.com**

**Tucker Gardner**

**LECKHAMPTON GARDENS**  
NORTHWAY, CAMBRIDGE

**Design without compromise**

Leckhampton Gardens offers a rare opportunity to enjoy contemporary living at its finest located in the sought after village of Northway, this exciting development comprises only four 2-story houses, stone or the one of a kind outdoor, just a short distance from Cambridge's city centre.

Every little detail throughout the development has been carefully considered - from the stunning open plan and light filled interiors featuring stone, splash kitchens and luxurious living rooms, bedrooms and bathrooms - through to the enclosed rear gardens with slate patios and lush lawns surrounded by a variety of established trees.

Prices from £1.295 million

To reserve a private viewing please contact:  
New homes office: **01223 845240**  
Cambridge office: **01223 350800**  
**tuckergardner.com**

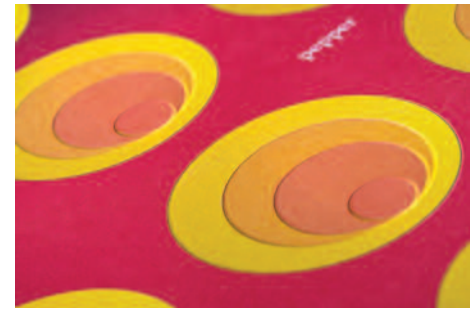
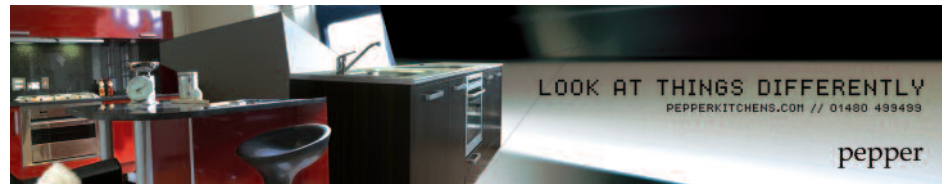
**Tucker Gardner**





**client: Pepper Kitchens - St Ives**

- advert design and copy writing
- website design and build
- large format exhibition materials
- promotional materials design
- brochure design and copy writing
- newsletter design and copy writing

















# commercial

In the current economic climate the excess supply of commercial spaces means that new projects need a fully integrated approach to marketing. We work with developers and agents to produce distinctive branding and high quality brochures, websites and advertising to ensure that the developments attract attention.







**BROERS** BUILDING  
CAMBRIDGE

**client:**

**Bidwells Cambridge**

- branding
- large format exhibition materials
- promotional materials design
- brochure design and copy writing







# iconix park

WHERE BUSINESS MAKES ITS MARK

[welcome](#)  
[about](#)  
[availability](#)  
[brochure](#)  
[specification](#)  
[news/press](#)  
[location](#)  
[contact](#)

**Space to create**

Iconix One comes equipped for the needs of the most ambitious and forward-thinking businesses.

Featuring an impressive double-height all glass entrance reception with polished ceramic floor, this 2-storey contemporary building offers high specification office space.

An information pack incorporating floor plans, elevations, specification and other information in respect of ICONIX ONE is available from Januarys and Jeffersons Commercial.

**iconix ONE**  
 CAMBRIDGE  
 WHERE BUSINESS MAKES ITS MARK  
 For more information please contact:  
**Januarys**  
 01223 326800  
 www.januarys.co.uk  
**JEFFERSONS**  
 01223 315716  
 www.jeffersons.co.uk  
 Development by:  
**TURNSTONE**  
 www.turnstonecommercial.co.uk

**GALLERY**  
 View the latest development pictures

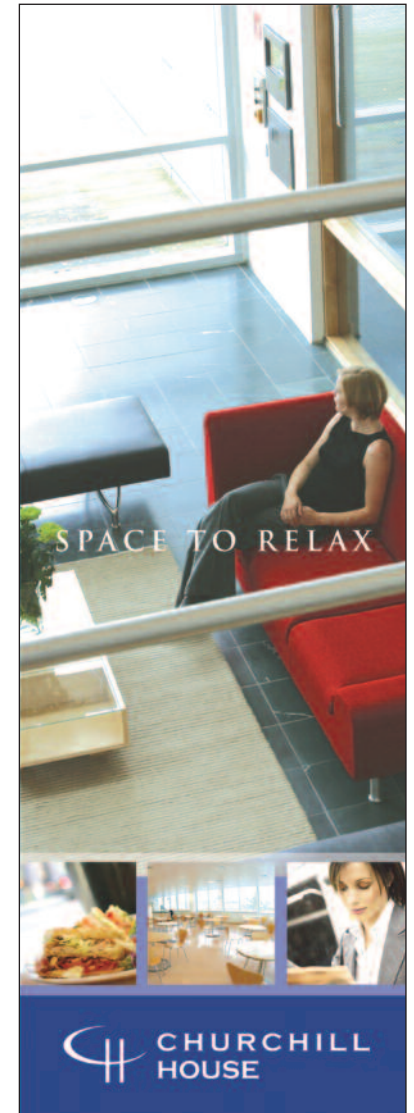
**MORE**

**iconix four**   **iconix five**  
 WHERE BUSINESS MAKES ITS MARK  
 NEW CAMBRIDGE OFFICES  
 8,841 SQ FT - 34,294 SQ FT

**TO LET**

WWW.ICONIXCAMBRIDGE.COM





- client: The Crown Estate - London**
- brochure design
  - copy writing
  - large format materials
  - print advert design
  - art direction and photography





adrenaline 

If you are looking give your development a little added stimulation contact:

Andrew Ashworth,  
Marketing Director,  
Adrenaline Creative

tel: 01223 421264  
email: [info@adrenalinecreative.co.uk](mailto:info@adrenalinecreative.co.uk)  
web: [adrenalinecreative.co.uk](http://adrenalinecreative.co.uk)

St John's Innovation Centre  
Cowley Road  
Cambridge  
CB4 0WS

